

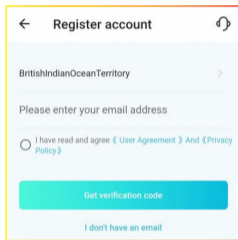


User Manual

Catalog

English	02-05
Deutsch	06-09
Français	10-13
Español	14-17
Italiano	18-21

Step 1. App Download and Registration

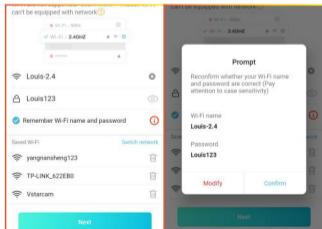
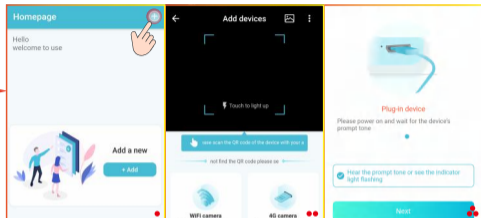


- 1 Search for "O-KAM Pro" in App Store or Google Play, or scan the QR code to download the App.
- 2 Select "Register now", select your corresponding region, and enter your email address to complete the registration.

Step 2. Add Devices

1 ▶ WIFI Devices

- 1 Open the App, log in the account, and click "+", scan the QR code on the camera;



- 2 Enter the correct WiFi password;



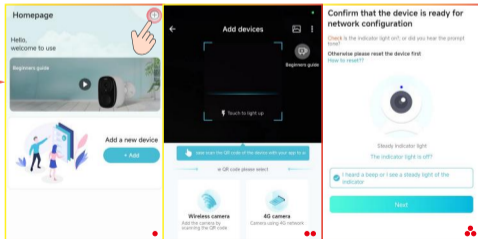
- 3 Use the camera to scan the QR code generated by the mobile phone and keep it at about 15-30cm;

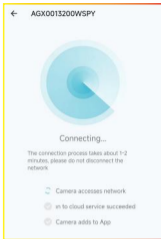
4 Bind now.



2> 4G Devices

- 1 Open the App, log in the account, and click "⊕", scan the QR code on the camera;

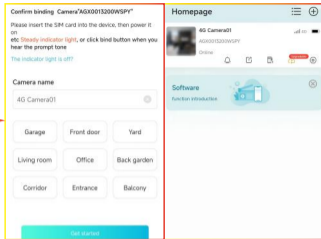




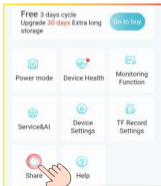
2 Wait for the device to connect to the network;

3 Experience now.

Note: For 4G device, insert SIM card first and make sure the device is online.



Step 3. Device sharing

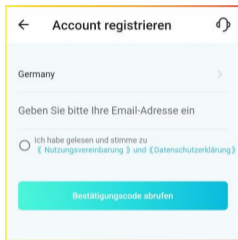


1 Click "System settings"-Share;

2 QR code sharing.



Schritt 1. App herunterladen und registrieren

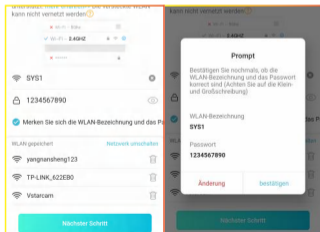
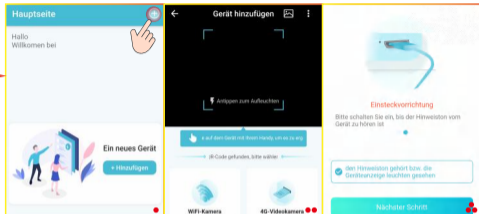


- 1 Suchen Sie im App Store nach “O-KAM Pro”.oder Google Play oder scannen Sie den QR-Code um die App herunterzuladen.
- 2 Wählen Sie,“Registrieren Sie jetzt ”, wählen Sie Ihre entsprechende Region aus und geben Sie Ihre E-Mail-Adresse ein, um die Registrierung abzuschließen.

Schritt 2. Geräte hinzufügen

1 ▶ WIFI-Geräte

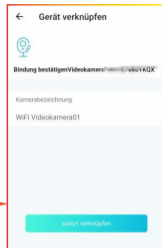
- 1 Öffnen Sie die App, melden Sie sich beim Konto an und klicken Sie auf “⊕”, scannen Sie den QR-Code auf der Kamera;



- 2 Geben Sie das richtige WLAN-Passwort ein ;



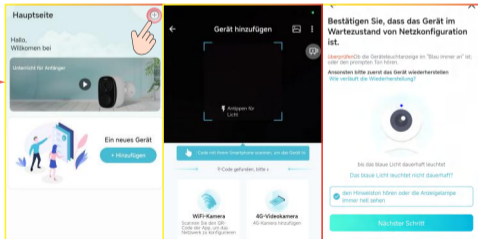
- 3 Verwenden Sie die Kamera, um den vom Mobiltelefon generierten QR-Code zu scannen, und halten Sie ihn in einem Abstand von etwa 15 bis 30 cm.



- 4 Jetzt binden.

2 ▶ 4G-Geräte

- 1 Öffnen Sie die App, melden Sie sich beim Konto an, klicken Sie auf “⊕” und scannen Sie den QR-Code auf der Kamera.

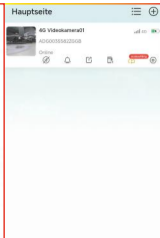
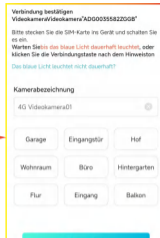




2 Warten Sie, bis das Gerät eine Verbindung zum Netzwerk hergestellt hat.

3 Jetzt erleben.

Hinweis: Legen Sie bei 4G-Geräten zuerst die SIM-Karte ein und stellen Sie sicher, dass das Gerät online ist.



Schritt 3. Gerätefreigabe

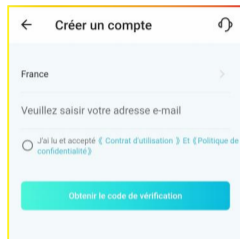


1 Klicken Sie auf "Systemeinstellungen" – Teilen;

2 Teilen von QR-Codes.



Étape 1. Téléchargement et enregistrement de l'application

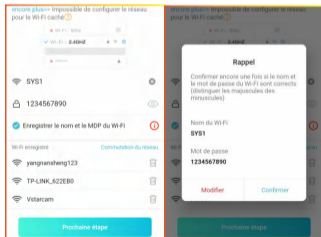
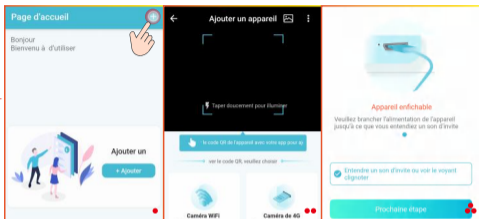


- 1 Recherchez "O-KAM Pro" dans l'App Store ou Google Play, ou scannez le code QR pour télécharger l'application.
- 2 Sélectionnez "Inscrivez-vous maintenant", sélectionnez votre région correspondante et entrez votre adresse e-mail pour terminer l'inscription.

Étape 2. Ajouter des appareils

1 ▶ Appareils WIFI

- 1 Ouvrez l'application, connectez-vous au compte et cliquez sur "+", scannez le code QR sur l'appareil photo;

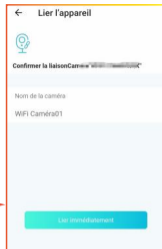


- 2 Entrez le mot de passe Wi-Fi correct ;



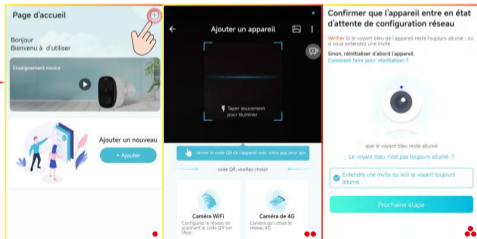
- 3 Utilisez l'appareil photo pour scanner le code QR généré par le téléphone portable et maintenez-le à environ 15-30 cm;

- 4 Lier maintenant.



2> Appareils 4G

- 1 Ouvrez l'application, connectez-vous au compte et cliquez sur «⊕», scannez le code QR sur l'appareil photo ;

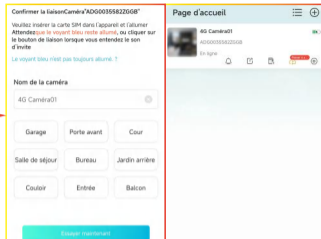




2 Attendez que l'appareil se connecte au réseau ;

3 Expérimentez maintenant.

Remarque : pour les appareils 4G, insérez d'abord la carte SIM et assurez-vous que l'appareil est en ligne.



Étape 3. Partage d'appareils

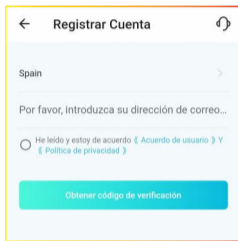


1 Cliquez sur "Paramètres système" -Partager;

2 Partager le code QR.



Paso 1. Descarga y registro de la aplicación

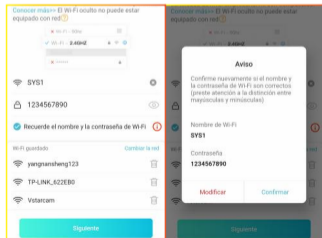
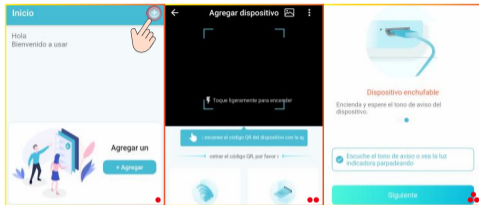


- 1 Busque "O-KAM Pro" en la App Store o Google Play, o escanear el código QR para descargar la aplicación.
- 2 Seleccione "Registrarse ahora", seleccione su región correspondiente e ingrese su dirección de correo electrónico para completar el registro.

Paso 2. Agregar dispositivos

1 ▶ Dispositivos WIFI

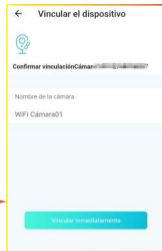
- 1 Abra la aplicación, inicie sesión en la cuenta y haga clic en "+", escanee el código QR en la cámara;



- 2 Ingrese la contraseña WiFi correcta;



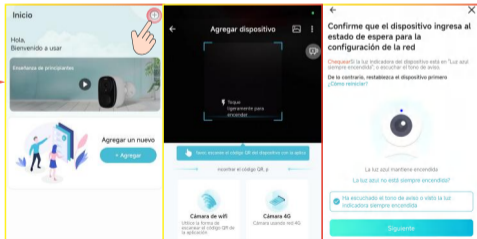
- 3 Use la cámara para escanear el código QR generado por el teléfono móvil y manténgalo a unos 15-30 cm;



- 4 Enlazar ahora.

2 ▶ Dispositivos 4G

- 1 Abra la aplicación, inicie sesión en la cuenta y haga clic en "+", escanee el código QR en la cámara;

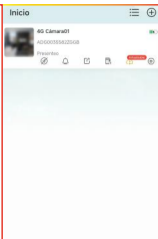
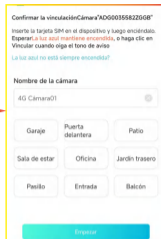




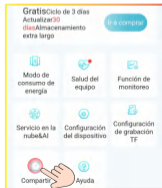
2 Espere a que el dispositivo se conecte a la red;

3 Experimente ahora.

Nota: Para dispositivos 4G, primero inserte la tarjeta SIM y asegúrese de que el dispositivo esté en línea.

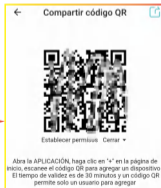


Paso 3. Uso compartido de dispositivos

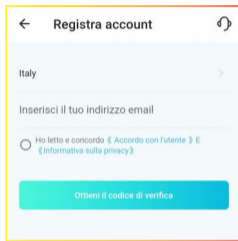


1 Haga clic en "Configuración del sistema"-Compartir;

2 Compartir código QR.



Passaggio 1. Download e registrazione dell'app

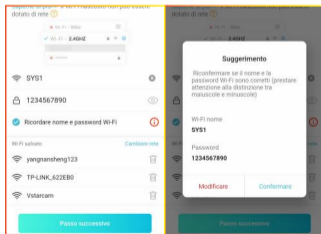
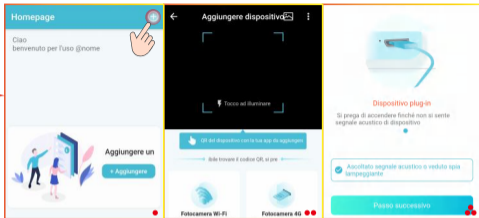


- 1 Cerca "O-KAM Pro" nell'App Store o Google Play o scansiona il codice QR per scaricare l'App.
- 2 Seleziona "Registrati ora", seleziona la regione corrispondente e inserisci il tuo indirizzo email per completare la registrazione.

Passaggio 2. Aggiungi dispositivi

1 ▶ Dispositivi WIFI

- 1 Apri l'app, accedi all'account e fai clic su "⊕", scansiona il codice QR sulla fotocamera;

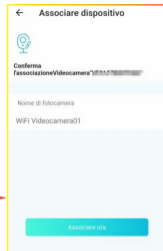


- 2 Immettere la password WiFi corretta;



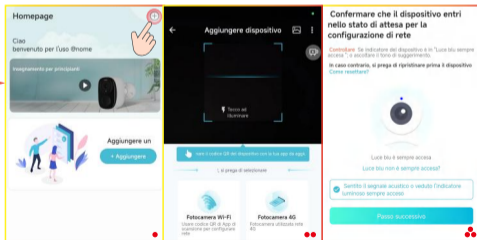
- 3 Usa la fotocamera per scansionare il codice QR generato dal cellulare e mantienilo a una distanza di circa 15-30 cm;

4 Lega ora.



2 ▶ Dispositivi 4G

- 1 Apri l'app, accedi all'account e fai clic su "⊕", scansiona il codice QR sulla fotocamera;

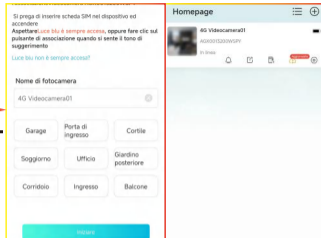




2 Attendere che il dispositivo si connetta alla rete;

3 Sperimentalo adesso.

Nota: per il dispositivo 4G, inserire prima la scheda SIM e assicurarsi che il dispositivo sia online.



Passaggio 3. Condivisione del dispositivo



1 Fai clic su "Impostazioni di sistema" -Condividere;

2 Condivisione del codice QR.





3-05-02-007-4105

物料编码:3-05-02-007-4105

材质:105克铜版纸

尺寸:120*80mm

要求:四色印刷+骑马钉(一个钉)

注意:

- 1.印刷后图文需清晰可见,且同一物料编码必须保持色调一致(同物同色)!!
- 2.制作前请严格校对,必须先打样图稿,待确认无误后再批量印刷,若有问题请及时联系。